

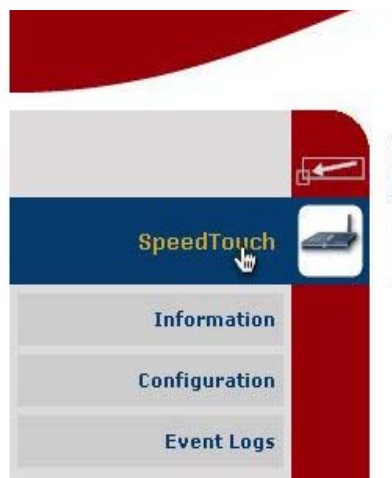
Setting up a SpeedTouch 546/546i ADSL router via LAN

Before you configure the router, make sure you've connected the router to the computer correctly. The router's Ethernet lamp lights green when the connection between the computer and the router is established.

Your ADSL router's IP address is 192.168.1.254. To access the router, you need to configure the parameters under **Local Area Connection** for the network card connected to the router. Right-click the icon and select **Properties** from the menu. Under **This connection uses following items**, locate the **Internet protocol** and click the **Properties** button. Check the boxes next to **Obtain an IP address automatically** and **Obtain DNS server address automatically**, then click the **OK** button and return to the **Local Area Connection** properties window. Click **OK** to close the window.



If all parameters are correct, open your web browser and in the address bar type <http://192.168.1.254>. When the administration interface opens, click the **SpeedTouch** button in the left side menu.



Under **Pick a task**, select **Set Up**.

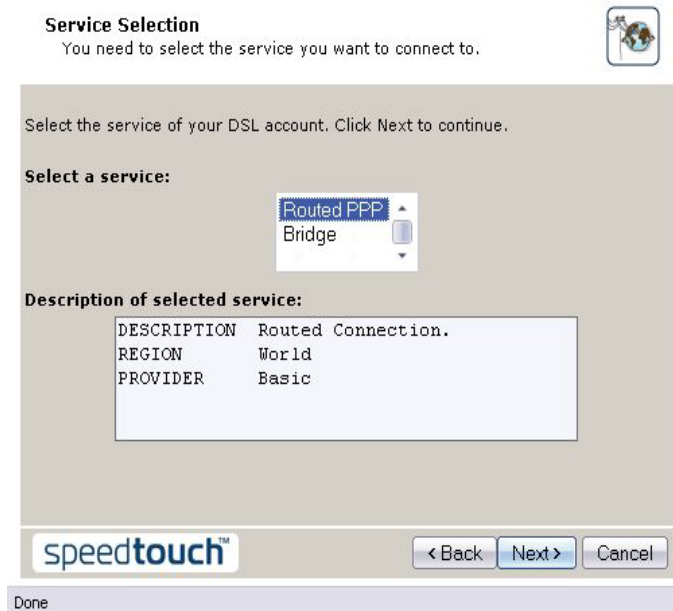
Pick a task...

- ➔ [Set Up](#)
- ➔ [Restart](#)
- ➔ [Return to Factory Default Settings](#)
- ➔ [View event logs](#)
- ➔ [Check connectivity to the Internet](#)

After short loading, *SpeedTouch Easy Setup* welcome screen appears. Click the **Next** button.



Select **Routed PPP** under **Select a service**, then click the **Next** button.



Enter **8.35** in the **VPI/VCI** field, then choose **PPP over Ethernet** as your **Connection Type**.

Routed Internet Connection
Specify the details of the Internet connection. All information should be provided by your ISP.

VPI/VCI: 8.35
Choose a VPI/VCI from the list

Connection Type:
 PPP over ATM (PPPoA)
 PPP over Ethernet (PPPoE)

speedtouch™ < Back Next > Cancel

Done

Enter your username and password.

Internet Account Settings
Specify the details of your Internet Account. All information should be provided by your ISP.

User Name: adsluser@beograd.com
Enter your Internet connection user name.

Password: [REDACTED]
Enter your Internet connection password.

Confirm Password: [REDACTED]
Re-enter your password.

speedtouch™ < Back Next > Cancel

Done

If desired, enter a password to prevent changes to router configuration.

Access Control
Specify user name and password to prevent unwanted access to the SpeedTouch management interface.

User Name: Administrator
Enter a user name.

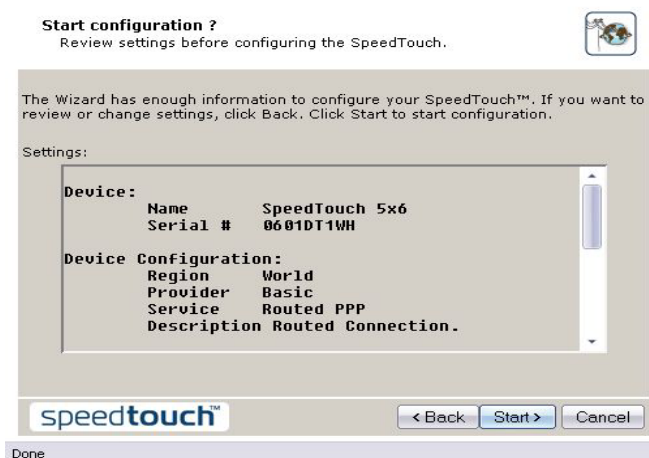
Password: [REDACTED]
Enter a password.

Confirm Password: [REDACTED]
Re-enter the password.

speedtouch™ < Back Next > Cancel

Done

Click the **Start** button to save your configuration.



Wait until your router configuration is saved.



Click the **Finish** button to exit *Easy Setup*.

